



## REGIONAL SPECIALISED METEOROLOGICAL CENTRE -TROPICAL CYCLONES, NEW DELHI TROPICAL WEATHER OUTLOOK

DEMS-RSMC TROPICAL CYCLONES NEW DELHI DATED 30.06.2025

**TROPICAL WEATHER OUTLOOK FOR THE NORTH INDIAN OCEAN (THE BAY OF BENGAL AND THE ARABIAN SEA) VALID FOR THE NEXT 168 HOURS ISSUED AT 0600 UTC OF 30.06.2025 BASED ON 0300 UTC OF 30.06.2025.**

### BAY OF BENGAL:

Yesterday's low-pressure area over Northwest Bay of Bengal and adjoining West Bengal and Bangladesh coasts moved slowly west-northwestwards and lay over coastal Gangetic West Bengal & neighbourhood at 0300 UTC of today, the 30th June 2025. The associated cyclonic circulation extended upto 5.8 km above mean sea level. It is likely to move slowly west-northwestwards across Gangetic West Bengal, North Odisha, & Jharkhand during next 2 days.

Scattered to broken low and medium clouds with embedded intense to very intense convection lay over north, central & southeast Bay of Bengal and north Andaman Sea. Scattered low and medium clouds with embedded moderate to intense convection lay over southwest Bay of Bengal and south Andaman Sea.

### \*PROBABILITY OF CYCLOGENESIS (FORMATION OF DEPRESSION) DURING NEXT 168 HRS:

24 HOURS	24-48 HOURS	48-72 HOURS	72-96 HOURS	96-120 HOURS	120-144 HOURS	144-168 HOURS
NIL	NIL	NIL	NIL	NIL	NIL	NIL

\*NOTE: EVERY 24HR FORECAST IS VALID UPTO 0300 UTC (0830 IST) OF NEXT DAY

### ARABIAN SEA:

Yesterday's upper air cyclonic circulation over central parts of north Arabian Sea became less marked at 0300 UTC of today, the 30th June 2025.

Scattered low and medium clouds with embedded moderate to intense convection lay over westcentral & southeast Arabian Sea off Karnataka – Kerala coasts and Lakshadweep Islands area. Scattered low and medium clouds with embedded isolated weak to moderate convection lay over the rest of the Arabian Sea.

### \*PROBABILITY OF CYCLOGENESIS (FORMATION OF DEPRESSION) DURING NEXT 168 HRS:

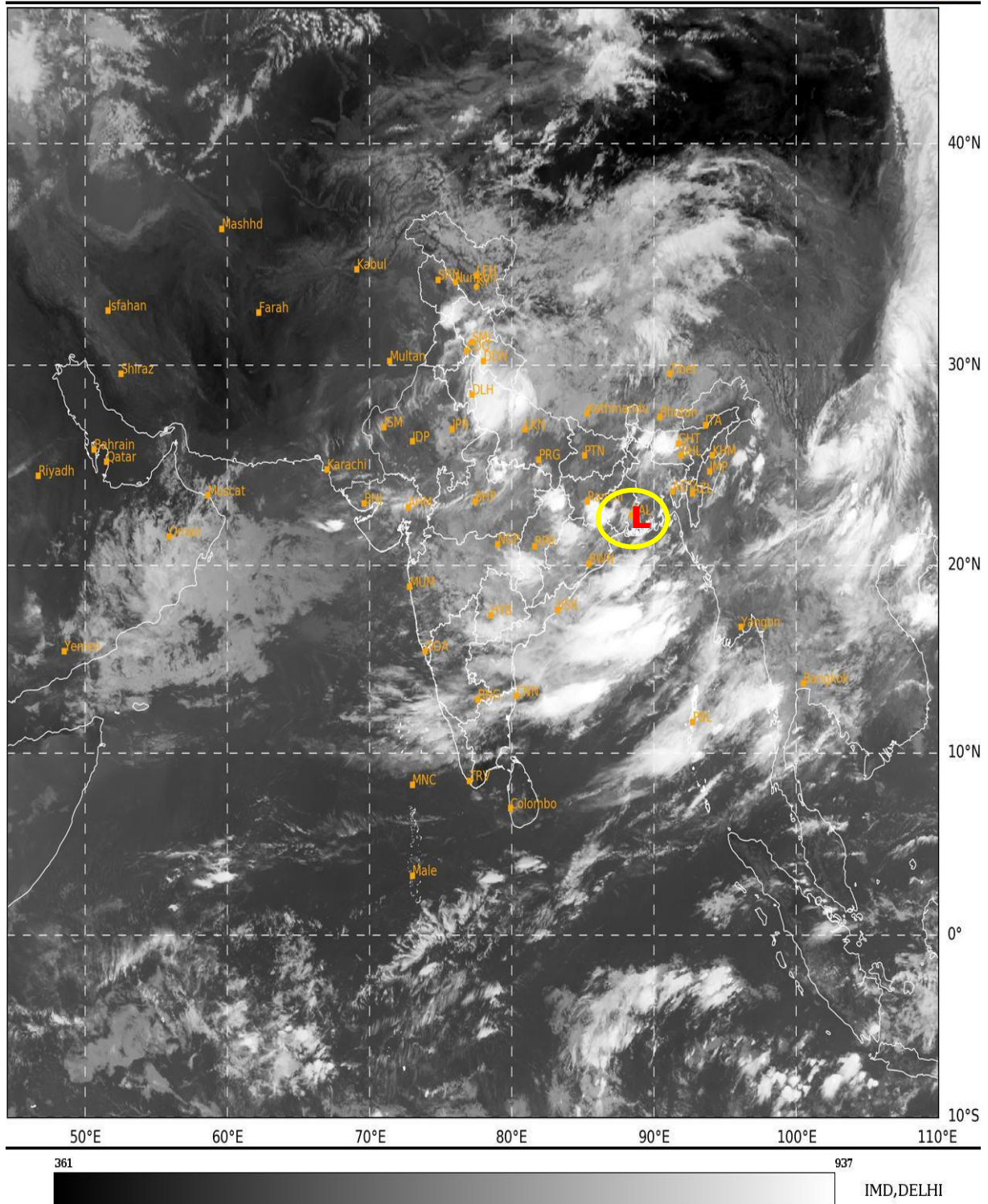
24 HOURS	24-48 HOURS	48-72 HOURS	72-96 HOURS	96-120 HOURS	120-144 HOURS	144-168 HOURS
NIL	NIL	NIL	NIL	NIL	NIL	NIL

\*NOTE: EVERY 24HR FORECAST IS VALID UPTO 0300 UTC (0830 IST) OF NEXT DAY

REMARKS: NIL

SAT : INSAT-3DR IMG  
IMG\_TIR1 10.8 um  
L1C Mercator

30-06-2025/(0315 to 0342) GMT  
30-06-2025/(0845 to 0912) IST



**L: Low pressure Area**

Cloud distribution: (a) Isolated: <25%, Scattered:25-50%, Broken: 51-75%, Solid:>75%, Convection Intensity: (a) Weak: Cloud Top Temperature(CTT)>-25°C,(b)Moderate:CTT:-25°Cto-40°C,(c)Intense:CTT: -41°Cto -70°Cand(d)Very Intense::Less than -70°C  
PROBABILITYOFCYCLOGENESIS(FORMATIONOFDEPRESSION):NIL:0%,LOW:1-33%,MODERATE:34-66%ANDHIGH:67-100%  
ThisisaguidanceBulletinforWMO/ESCAPPanelMembercountries.VisitrespectiveNationalwebsitesforCountryspecificBulletins